



**CHRIS GHIDORZI**  
 m: 715.302.8185 | chrisg@ghidorzi.com  
 2100 Stewart Ave., Suite 300  
 Wausau, WI 54401  
 www.ghidorzi.com

# Space Available

2600 Stewart Center  
**2600 STEWART AVE. | WAUSAU, WI 54401**



## FEATURES

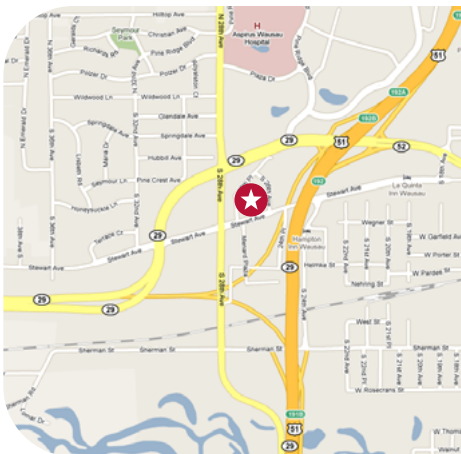
- Attractive second generation, Class A office space
- Immediate access and visibility from US 51/I-39 and Highway 29
- Immediate occupancy or build to suit options
- Wausau medical campus within one mile

1,068 - 1,829 rentable sq ft.

## DEMOGRAPHICS

ROAD	AVERAGE ANNUAL DAILY TRAFFIC 2022 (vehicles)
Stewart Ave.	7,400
28th Ave.	9,700
US 51/I-39	47,800
CITY	2020 CENSUS POPULATION
Wausau	39,994
Wausau Metro	163,172

## AREA MAP



## ANCHOR TENANTS

- Wausau Child Care, DaVita Dialysis and Aging & Disability Resource Center

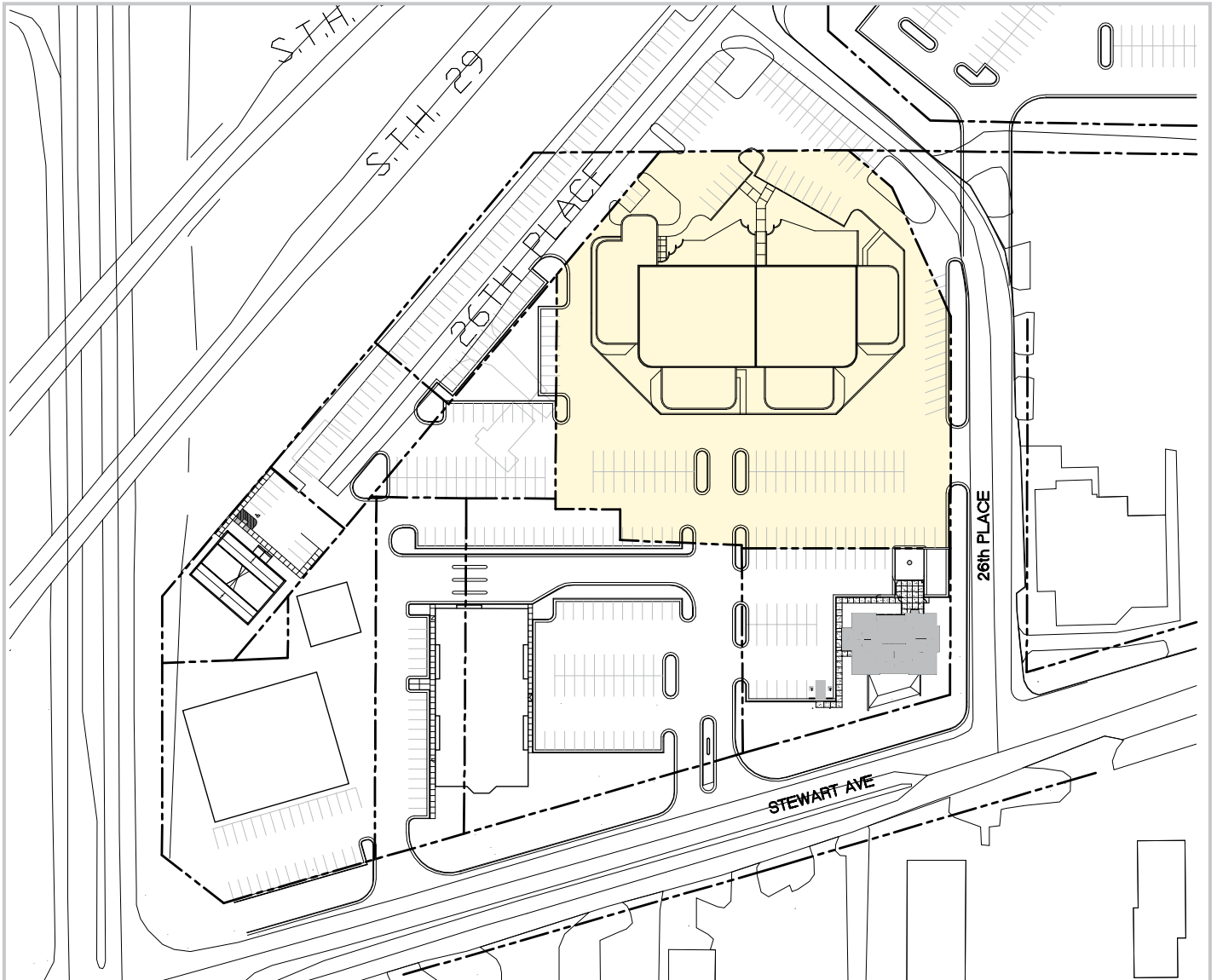
THIS DOCUMENT HAS BEEN PREPARED SOLELY FOR INFORMATION PURPOSES. WHILE THE INFORMATION CONTAINED HEREIN IS FROM SOURCES DEEMED RELIABLE, IT HAS NOT BEEN INDEPENDENTLY VERIFIED. THIS DOCUMENT IS PROVIDED SUBJECT TO ERRORS, OMISSIONS AND CHANGES IN INFORMATION.



# Space Layouts

**CHRIS GHIDORZI**  
m: 715.302.8185 | [chrsg@ghidorzi.com](mailto:chrsg@ghidorzi.com)  
2100 Stewart Ave., Suite 300  
Wausau, WI 54401  
[www.ghidorzi.com](http://www.ghidorzi.com)

2600 Stewart Center  
**2600 STEWART AVE. | WAUSAU, WI 54401**





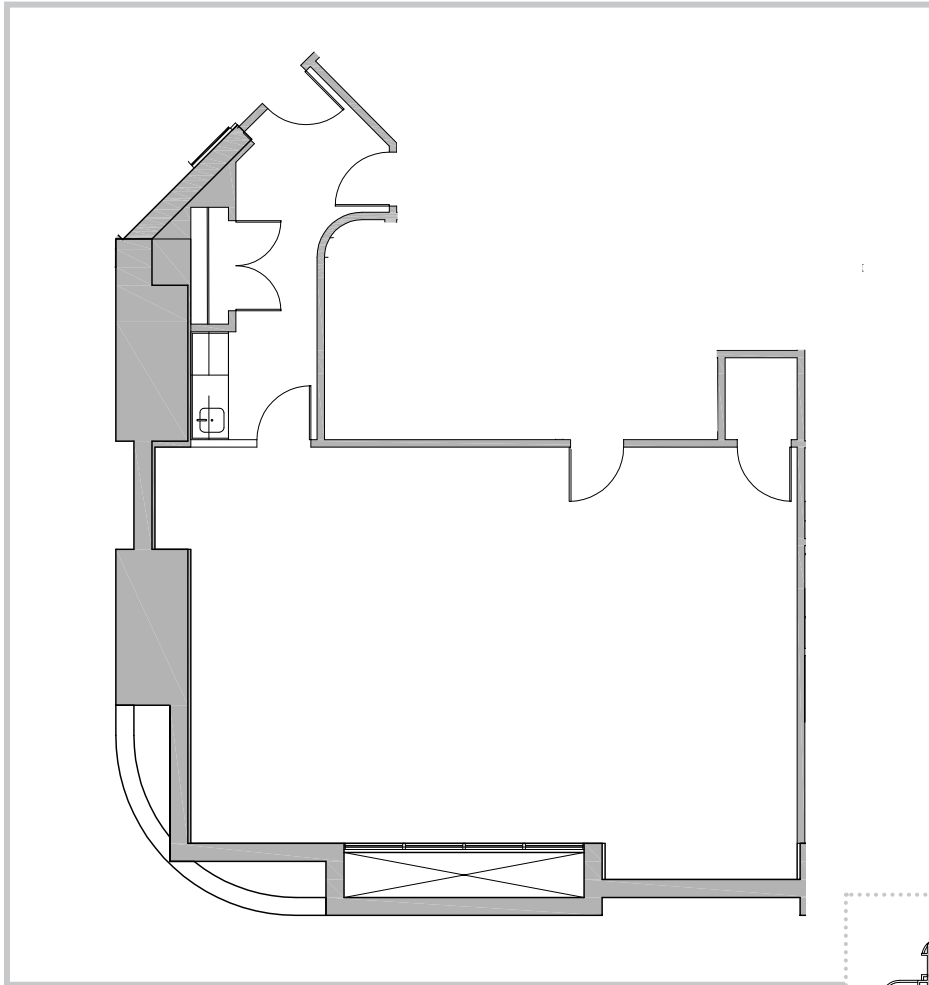
**CHRIS GHIDORZI**  
m: 715.302.8185 | [chrisg@ghidorzi.com](mailto:chrisg@ghidorzi.com)  
2100 Stewart Ave., Suite 300  
Wausau, WI 54401  
[www.ghidorzi.com](http://www.ghidorzi.com)

# Space Layouts

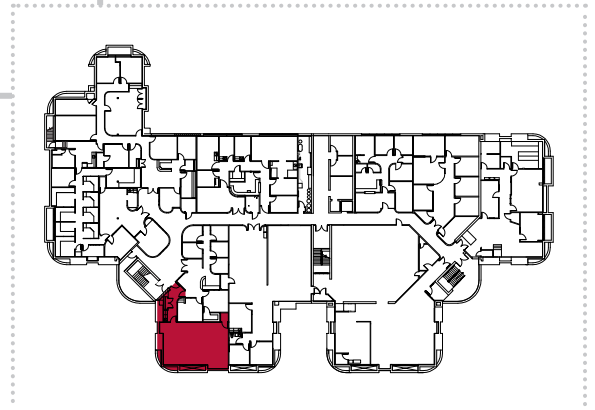
2600 Stewart Center  
**2600 STEWART AVE. | WAUSAU, WI 54401**

## Suite 20

1,068 rentable sq ft.



SUITE LOCATION



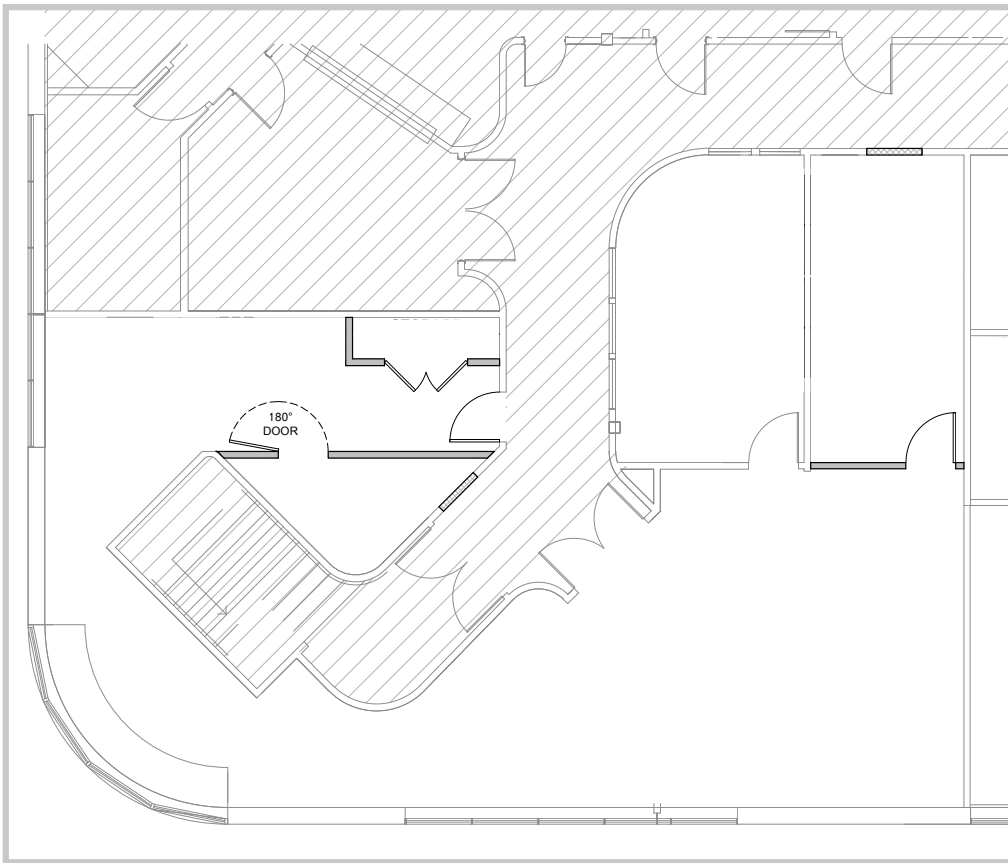


**CHRIS GHIDORZI**  
m: 715.302.8185 | [chriscg@ghidorzi.com](mailto:chriscg@ghidorzi.com)  
2100 Stewart Ave., Suite 300  
Wausau, WI 54401  
[www.ghidorzi.com](http://www.ghidorzi.com)

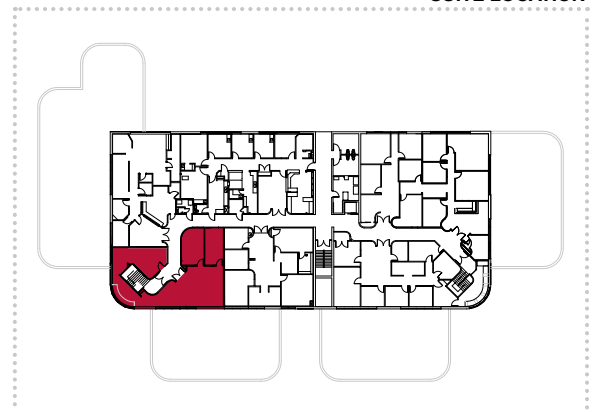
# Space Layouts

2600 Stewart Center  
**2600 STEWART AVE. | WAUSAU, WI 54401**

**Suite 262**  
1,829 rentable sq ft.



SUITE LOCATION



**SUITE LAYOUT**