



Available

CHRIS GHIDORZI
 m: 715.302.8185 | chrsg@ghidorzi.com
 2100 Stewart Ave., Suite 300
 Wausau, WI 54401
 www.ghidorzi.com

1201 Westwood Drive
 WAUSAU, WI 54401

FEATURES

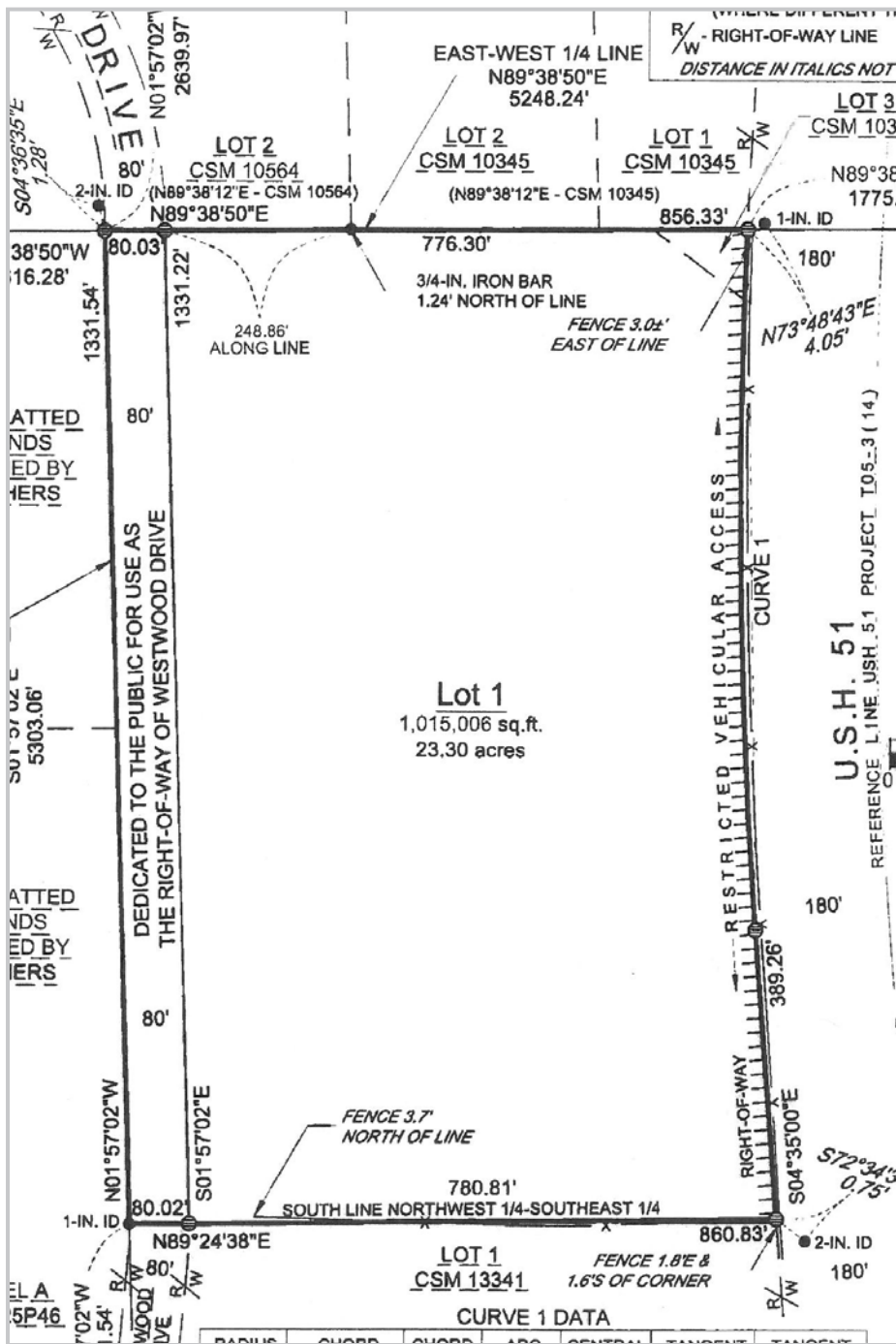
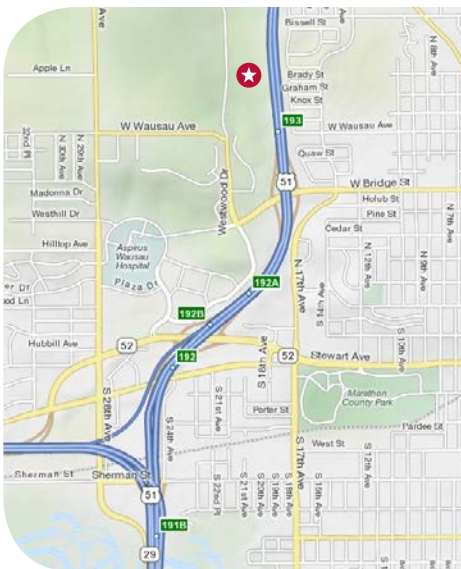
- High visibility from US 51/I-39
- Part of a growing business park that includes WPS, West Business services, Aspirus, Rasmussen College, Liberty Mutual and Wausau Financial.
- Located less than a mile from Wausau's Medical campus
- Buy or development options
- Preliminary wetland deliniation completed
- Current use is agriculture

DEMOGRAPHICS

ROAD	AVERAGE ANNUAL DAILY TRAFFIC 2016 (vehicles)
US 51/I-39	26,800

CITY	2010 CENSUS POPULATION
Wausau	39,106
Wausau Metro	134,063

AREA MAP



THIS DOCUMENT HAS BEEN PREPARED SOLELY FOR INFORMATION PURPOSES. WHILE THE INFORMATION CONTAINED HEREIN IS FROM SOURCES DEEMED RELIABLE, IT HAS NOT BEEN INDEPENDENTLY VERIFIED. THIS DOCUMENT IS PROVIDED SUBJECT TO ERRORS, OMISSIONS AND CHANGES IN INFORMATION.



Available

CHRIS GHIDORZI

m: 715.302.8185 | chrsg@ghidorzi.com
2100 Stewart Ave., Suite 300
Wausau, WI 54401
www.ghidorzi.com

1201 Westwood Drive
WAUSAU, WI 54401



AERIAL



Available

CHRIS GHIDORZI

m: 715.302.8185 | chrisg@ghidorzi.com
2100 Stewart Ave., Suite 300
Wausau, WI 54401
www.ghidorzi.com

1201 Westwood Drive
WAUSAU, WI 54401



CONCEPTUAL PLAN