

## CHRIS GHIDORZI

m: 715.302.8185 | chrisg@ghidorzi.com  
 2100 Stewart Ave., Suite 300  
 Wausau, WI 54401  
 www.ghidorzi.com

## 1201 Westwood Drive WAUSAU, WI 54401

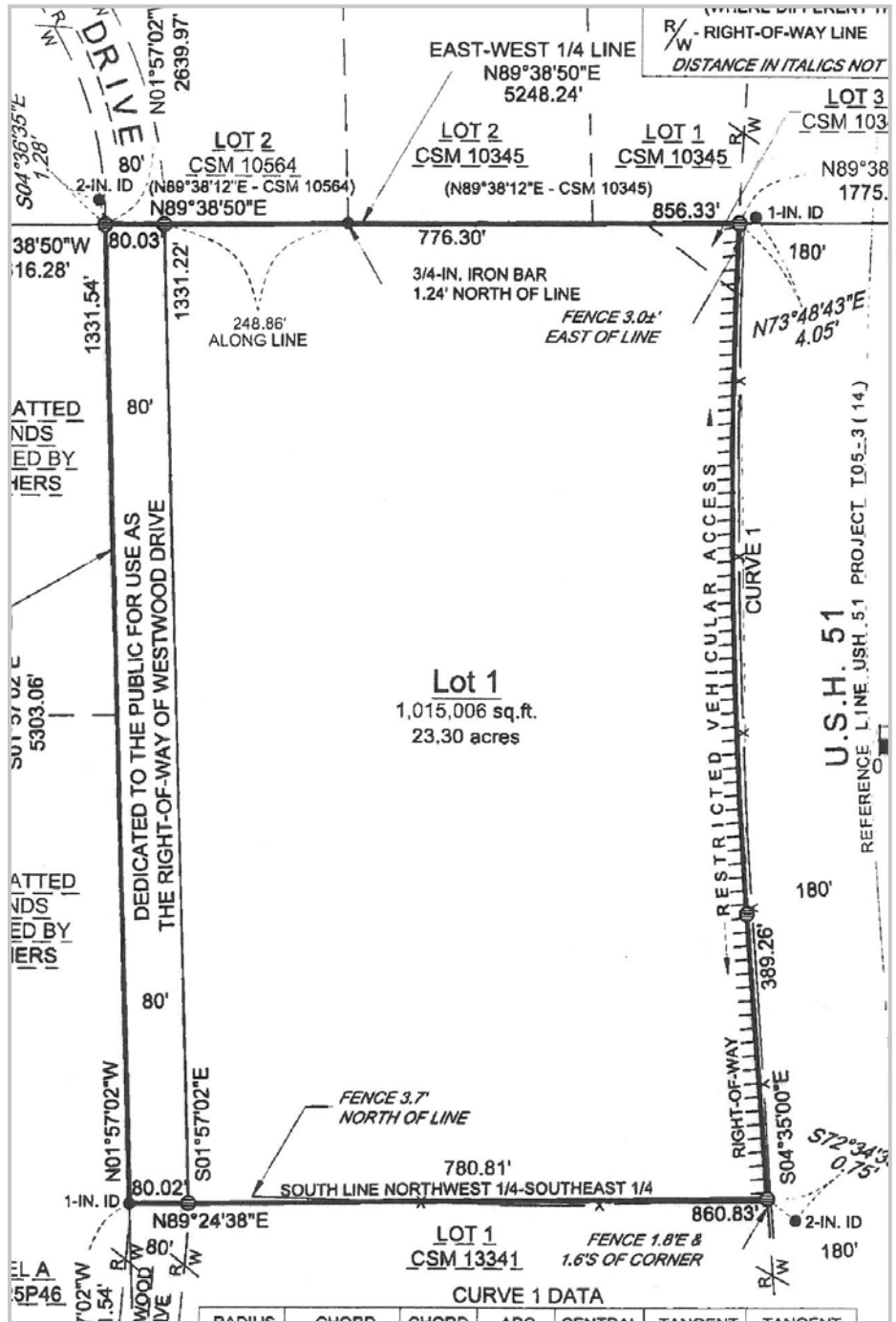
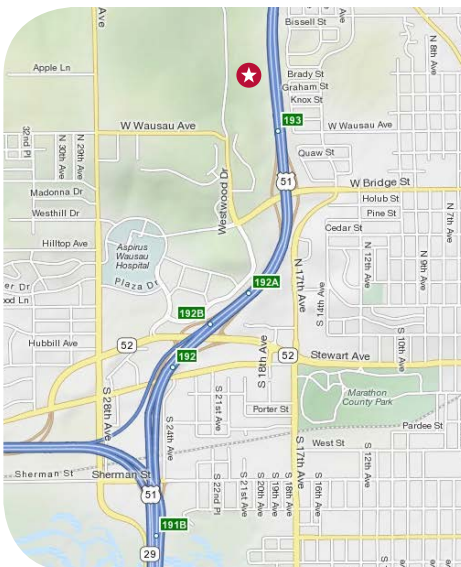
### FEATURES

- High visibility from US 51/I-39
- Part of a growing business park that includes WPS, West Business services, Aspirus, Rasmussen College, Liberty Mutual and Wausau Financial.
- Located less than a mile from Wausau's Medical campus
- Buy or development options
- Preliminary wetland deliniation completed
- Current use is agriculture

### DEMOGRAPHICS

ROAD	AVERAGE ANNUAL DAILY TRAFFIC 2014 (vehicles)
US 51/I-39	50,000
CITY	2010 CENSUS POPULATION
Wausau	39,106
Wausau Metro	134,063

### AREA MAP



THIS DOCUMENT HAS BEEN PREPARED SOLELY FOR INFORMATION PURPOSES. WHILE THE INFORMATION CONTAINED HEREIN IS FROM SOURCES DEEMED RELIABLE, IT HAS NOT BEEN INDEPENDENTLY VERIFIED. THIS DOCUMENT IS PROVIDED SUBJECT TO ERRORS, OMISSIONS AND CHANGES IN INFORMATION.



Available

**CHRIS GHIDORZI**

m: 715.302.8185 | [chrsg@ghidorzi.com](mailto:chrsg@ghidorzi.com)  
2100 Stewart Ave., Suite 300  
Wausau, WI 54401  
[www.ghidorzi.com](http://www.ghidorzi.com)

1201 Westwood Drive  
WAUSAU, WI 54401



AERIAL